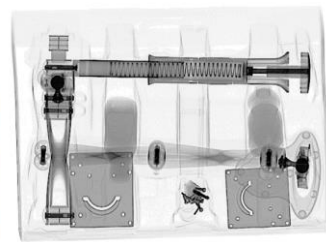
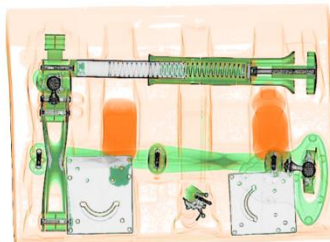
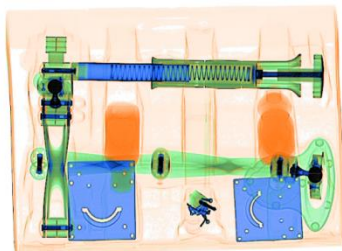




# X-ray Baggage Scanner

## FDT-SE5030C

FDT X-ray baggage scanners operate based on the x-ray penetration principle. Widely used in national security, which covers the national research institutions, detection centers, courts, prisons, procuratorates, Army, airports, subway and railway stations, docks, schools, embassies, tourist attraction, logistics, big events etc.





## Details

### General Specifications

Dimensions: 1690mm(L)×790mm(W)×1210mm(H)  
Tunnel size: 505mm (W) × 305mm (H)  
Conveyor speed: 0.20 m/s  
Conveyor height: 752mm  
Weight: 302Kg  
Storage temperature / humidity:  
-40 °C ± 3 °C ~ +60 °C ± 2 °C / 5% ~ 95% (no condensation)  
Operating temperature / humidity:  
0 °C ± 3 °C ~ + 40 °C ± 2 °C / 5% ~ 95% (no condensation)  
Power: AC220 V (-10% to + 10%), 50Hz ± 3Hz  
Power consumption: 0.4kVA

### Basic Specifications

Penetration: 30mm Steel(140kV)  
38mm Steel(160KV)  
Wire resolution: 40AWG  
Penetration resolution: 32AWG  
Spatial resolution: horizontal  
Φ1.0mm vertical Φ1.0mm

### X-ray Generator

Generation direction: Bottom-Up  
Tube voltage: 140~160kV Adjustable  
Tube current: 0.4~0.7mA Adjustable  
Cooling/ duty cycle: sealed oil / 100%  
Generation angle: 80 °

### Configuration

International brand electrical components  
Industrial PLC circuit control,  
Capacitance integral analog conversion, clear image  
Industrial computer, long-term stable and reliable system  
Ergonomic principle reading system,  
Radiation protection system (close to natural background)



### Image Processing:

- Color / black&white,
- Organic / inorganic,
- Super enhancement,
- Edge enhancement,
- Partial enhancement,
- Grayscale scanning,
- Image restoration,
- Zoom in / out,
- High / low energy penetration,
- Continuous observation,
- Playback (50),
- Image storage ( >10 w pic.)

### Others:

- One key shut-down,
- High density alarm,
- Drug and explosive powder detection
- Built-in Automatic self-diagnosis

## Dimensions

